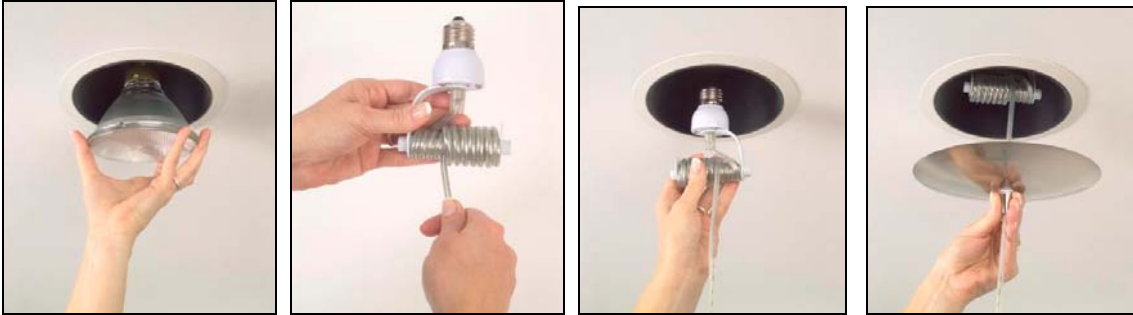




### Product Summary

The Instant Pendant Light is the easiest, most affordable DIY product available for turning a recessed light into a stylish hanging pendant light. No expensive electricians or time-consuming remodeling project. The IPL installs as simply as changing a light bulb.

### No tools required



**Recessed Lights - Before**



**Pendant Lights - After**



## **Product Description**

The **INSTANT PENDANT LIGHT** is available in either incandescent medium base or candelabra base models and includes:

1. **Detachable** decorative shade available in various styles and colors. The candelabra base shade is interchangeable with other decorative shades.
2. Patent-pending light fixture consisting of the following connected components:
  - Socket adapter – screws into a recessed light fixture
  - Cord spindle – cord wraps around to adjust cord length
  - Canopy - covers recessed light opening
  - Cord – available in various styles
  - Lamp cup – easy shade attachment

The **INSTANT SHOP LIGHT** is available in a medium base model only and includes:

1. **Attached** metal shade available in red, black, or silver
2. Patent-pending light fixture identical to the INSTANT PENDANT LIGHT
3. **Detachable** canopy extension for use with a standard light fixture in a garage, basement or work room:

**Standard Light – Before**



**Shop Light - After**



## Lowe's Products

- Arrive on the shelf November 2006 – March 2007
- Located in the *recessed light* section under the PORTFOLIO brand
- Called “Recessed Light Conversion Kit” (ITEM # 238938)
- Our products ALL work with incandescent recessed lights only
- Bulbs used in our pendants vary by style

**Coming this fall to Lowe's under the PORTFOLIO® brand lighting.....**



1. **Shop Light in a satin nickel finish** (shiny like chrome); uses standard bulbs up to 100 W
2. **Stylish cone-shaped pendant light**
  - Brushed nickel trim
  - Amber colored glass shade – (amber = yellowish brown)
  - Case glass shade with reflective white interior
  - Shade can be replaced with other designer shades
  - Uses candelabra base bulb (not included)
3. **Traditional bell-shaped pendant light**
  - Brushed nickel trim
  - Alabaster glass shade
  - Shade can be replaced with other designer shades
  - Uses candelabra base bulb (not included)

## Product Sales Information

Visit [www.WorthHomeProducts.com](http://www.WorthHomeProducts.com) or call 713-660-0025.

**WORTH**  
HOME PRODUCTS  
Elegant • Innovative • Affordable